

Living on the Cisco HyperFlex Edge

The Internet edge is moving to the branch and user device

Increased computing and storage demands at the edge



Cloud
80% of organizations that will use primarily SaaS by 2018
(Gartner, Public Cloud Services Forecast Overview)

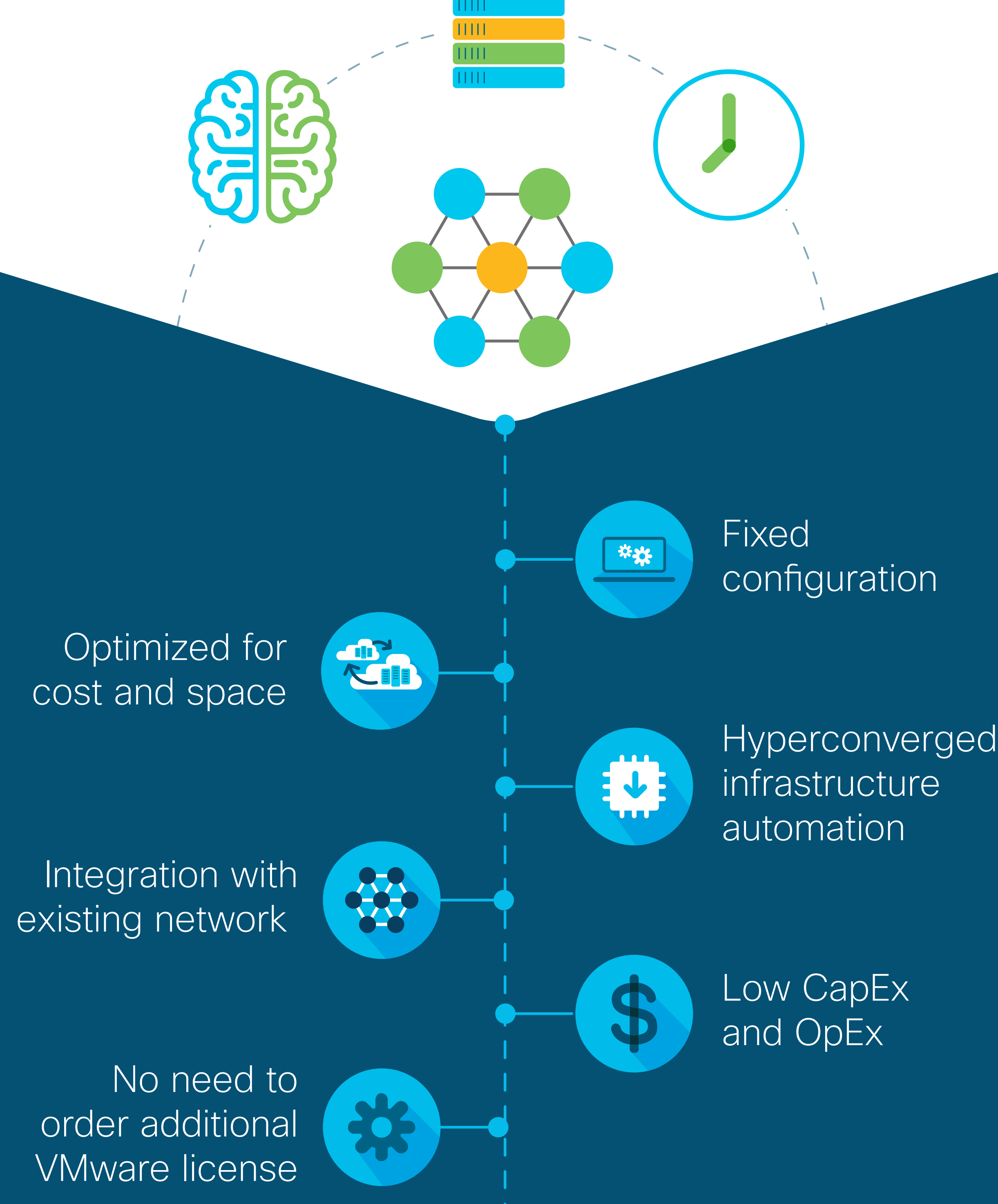
Mobility
The number of mobile-connected devices expected by 2018
10B

Video
The expected yearly increase in enterprise bandwidth and video adoption
20-50%
(Gartner, Enterprise Network Service Forecast Analysis)

In search of IT operational excellence at the edge



Introducing Cisco HyperFlex™ Edge



Cisco HyperFlex Edge Configuration

ROBO: Cisco HyperFlex HX220c



Computing: Processor	10 to 20 Cores
Memory: RAM	128 GB
Cache SSD	480 GB
Capacity HDD Count x Capacity	3 x 1.2 TB 6 x 1.2 TB
HDD Capacity per Node	1.5 TiB 3.01 TiB

Usable Capacity* Per Cluster* (3-node)

4.5 TiB

9.03 TiB

HX220 Hybrid
Cluster Size: 3
Replication Factor: 2
1G Network w/out F1
HX Clusters per vCenter: 100

[Get more information](#)